

**Solution**  
1 August · 🌐 Solution  
[www.facebook.com/pharmavideo/](http://www.facebook.com/pharmavideo/)

An orphan drug is -  
 1- A very cheap drug  
 2- A drug which has no therapeutic use  
 3- A drug needed for treatment or prevention of rare disease.  
 4- A drug which acts on orphan in receptor

For pharmacy related experimental videos please visit & subscribe solution on youtube.  
[www.youtube.com/c/SOLUTIONpushpendra](http://www.youtube.com/c/SOLUTIONpushpendra)

**ANSWER- THE RIGHT ANSWER IS- 03**



**Solution**  
2 August · 🌐 Solution  
[www.facebook.com/pharmavideo/](http://www.facebook.com/pharmavideo/)

Select the route of administration which carries the highest risk of adversely affecting vital function  
 1- Intra-arterial injection  
 2- Intrathecal injection  
 3- Intra-venous injection  
 4- Intra-muscular injection

For pharmacy related experimental videos please visit & subscribe solution on youtube.  
[www.youtube.com/c/SOLUTIONpushpendra](http://www.youtube.com/c/SOLUTIONpushpendra)

**ANSWER- THE RIGHT ANSWER IS- 03**

**Route of Administration**

Enteral	Parenteral	Other
Oral Route	Intramuscular Route	Topical Route
Buccal Route	Intravenous Route	Inhalation Route
Buccal/Sublingual	Subcutaneous Route	Rectal & Vaginal
	Intrathecal Route & Intradermal Route	

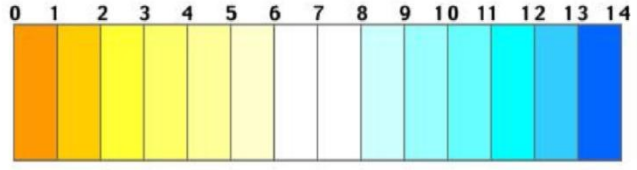
\* In some books there is several classes, which are part of above class

**Solution**  
3 August · 🌐 Solution  
[www.facebook.com/pharmavideo/](http://www.facebook.com/pharmavideo/)

Alkalinization of urine hastens the excretion of-  
 1- Weakly basic drugs  
 2- Weakly acidic drugs  
 3- Strong electrolytes  
 4- Nonpolar drugs

For pharmacy related experimental videos please visit & subscribe solution on youtube.  
[www.youtube.com/c/SOLUTIONpushpendra](http://www.youtube.com/c/SOLUTIONpushpendra)

← Acidic — Neutral — Basic →



Battery Acid
Lemon Juice
Wine
Normal Rain
Distilled Water
Baking Soda
Soft Soap
Ammonia
Lye

**ANSWER- THE RIGHT ANSWER IS- 02**

**Solution**  
4 August at 9:00 AM · 🌐 Solution  
[www.facebook.com/pharmavideo/](http://www.facebook.com/pharmavideo/)

Marked redistribution is a feature of  
 1- Highly lipid soluble drugs  
 2- Poorly lipid soluble drugs  
 3- Depot preparations  
 4- High plasma protein bound drugs

For pharmacy related experimental videos please visit & subscribe solution on youtube.  
[www.youtube.com/c/SOLUTIONpushpendra](http://www.youtube.com/c/SOLUTIONpushpendra)

**Arterial blood**

- 15 minutes: 9% to Vessel-rich group (75% CO<sub>2</sub>): brain, heart, kidney, liver
- 7 hours: 50% to Muscle group (18% CO<sub>2</sub>): skeletal muscle, skin
- 7.5 days: 19% to Fat (5% CO<sub>2</sub>)
- 2 weeks: 22% to Vessel-poor group (2% CO<sub>2</sub>): bone, tendon, cartilage

**ANSWER- THE RIGHT ANSWER IS- 01**



### Solution

5 August at 8:53 AM · 🌐

All these drugs cross the Blood-Brain Barrier (BBB) EXCEPT (Explanations are most welcome)

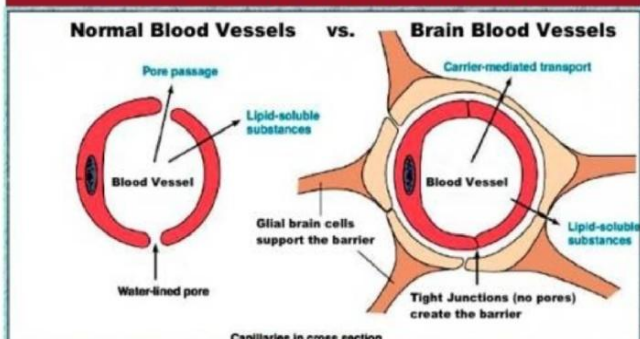
- 1- Morphine
- 2- Dopamine
- 3- Propranolol
- 4- Ether

Solution  
[www.facebook.com/pharmavideo/](http://www.facebook.com/pharmavideo/)

For pharmacy related experimental videos please visit & subscribe solution on youtube.

[www.youtube.com/c/SOLUTIONpushpendra](http://www.youtube.com/c/SOLUTIONpushpendra)

## The Blood Brain Barrier



ANSWER- THE RIGHT ANSWER IS- 02



### Solution

6 August at 9:00 AM · 🌐

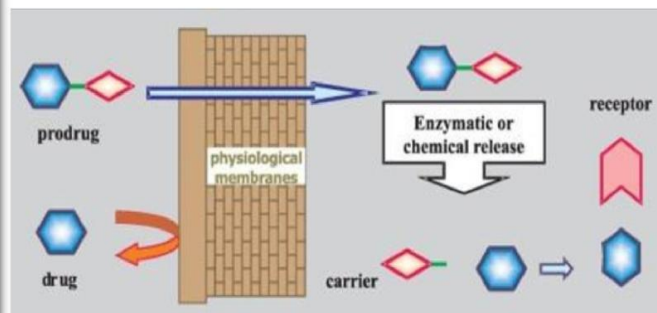
Which of the following is a example of prodrug ( Explanation for prodrug is highly welcome)

- 1- Hydralazine
- 2- Clonidine
- 3-Captopril
- 4- Enalapril

Solution  
[www.facebook.com/pharmavideo/](http://www.facebook.com/pharmavideo/)

For pharmacy related experimental videos please visit & subscribe solution on youtube.

[www.youtube.com/c/SOLUTIONpushpendra](http://www.youtube.com/c/SOLUTIONpushpendra)



ANSWER- THE RIGHT ANSWER IS- 04



### Solution

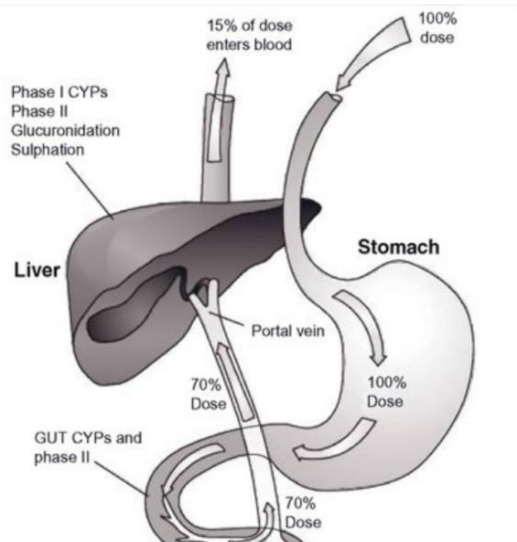
7 August at 9:00 AM · 🌐

Which of the following is another name or type of phase II metabolism ( One of the most Imp question)

- 1- Oxidation
- 2- Reduction
- 3- Conjugation
- 4-Hydrolysis

... See more

Solution  
[www.facebook.com/pharmavideo/](http://www.facebook.com/pharmavideo/)



ANSWER- THE RIGHT ANSWER IS- 03



### Solution

8 August at 9:00 AM · 🌐

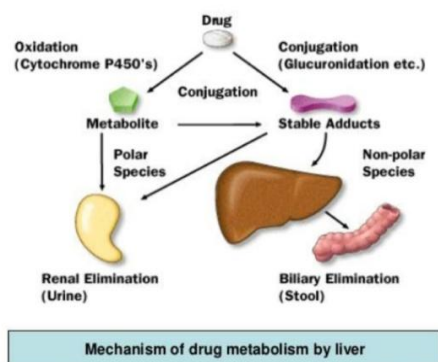
Cytochrome P450 enzyme is mainly responsible for metabolism. What is the exact meaning of P450?

- 1- Scientist name
- 2- Receptor number
- 3- Max Wavelength (Lambda Max)
- 4- None of the above.

Solution  
[www.facebook.com/pharmavideo/](http://www.facebook.com/pharmavideo/)

For pharmacy related experimental videos please visit & subscribe solution on youtube.

[www.youtube.com/c/SOLUTIONpushpendra](http://www.youtube.com/c/SOLUTIONpushpendra)



ANSWER- THE RIGHT ANSWER IS- 03



### Solution

9 August at 9:00 AM · 🌐

The drug excreted in saliva - (Most Important Question)

- 1- Tetracycline
- 2- Ampicillin
- 3- Lithium
- 4- Chloramphenicol

Solution  
[www.facebook.com/pharmavideo/](http://www.facebook.com/pharmavideo/)

For pharmacy related experimental videos please visit & subscribe solution on youtube.

[www.youtube.com/c/SOLUTIONpushpendra](http://www.youtube.com/c/SOLUTIONpushpendra)



**ANSWER- THE RIGHT ANSWER IS- 03**



### Solution

10 August at 9:00 AM · 🌐

Alcohol is eliminated by which of the following?

- 1- Zero order kinetics
- 2- First order kinetics
- 3- Second order kinetics
- 4- Third order kinetics

Solution  
[www.facebook.com/pharmavideo/](http://www.facebook.com/pharmavideo/)

For pharmacy related experimental videos... See more



**ANSWER- THE RIGHT ANSWER IS- 01**



### Solution

11 August at 9:00 AM · 🌐

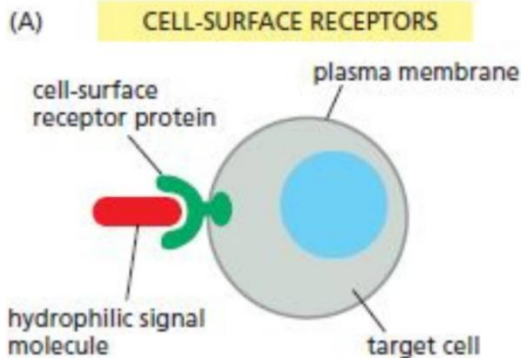
All of the following agents act by intracellular receptor EXCEPT

- 1- Thyroid Receptor
- 2- Vitamine D
- 3- Insulin
- 4- Steroids

Solution  
[www.facebook.com/pharmavideo/](http://www.facebook.com/pharmavideo/)

For pharmacy related experimental videos please visit & subscribe solution on youtube.

[www.youtube.com/c/SOLUTIONpushpendra](http://www.youtube.com/c/SOLUTIONpushpendra)



**ANSWER- THE RIGHT ANSWER IS- 03**



### Solution

11 August at 9:00 AM · 🌐

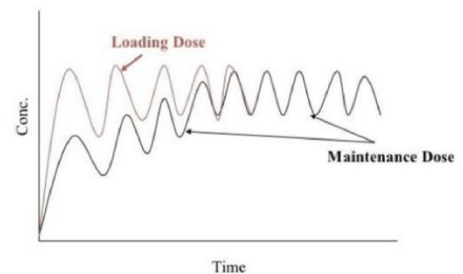
The loading dose of a drug is governed by its-

- 1- Renal clearance
- 2- Plasma half life
- 3- Volume of distribution (Vd)
- 4- Elimination rate constant

Solution  
[www.facebook.com/pharmavideo/](http://www.facebook.com/pharmavideo/)

For pharmacy related experimental videos please visit & subscribe solution on youtube.

[www.youtube.com/c/SOLUTIONpushpendra](http://www.youtube.com/c/SOLUTIONpushpendra)



**ANSWER- THE RIGHT ANSWER IS- 03**



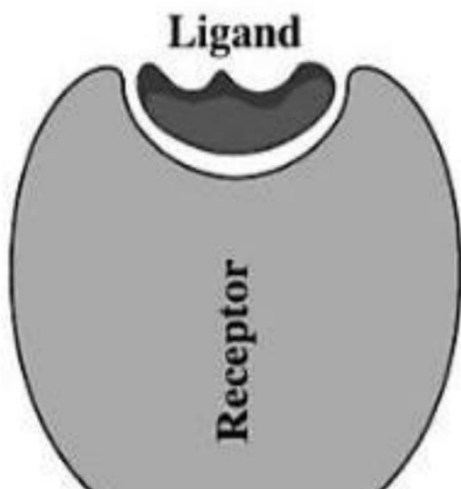
**Solution**

12 August at 9:00 AM · 🌐

Which of the following exhibit a non-receptor mediated action ( You are invited to give the MOA for your ans)

- 1- Alcohol
- 2- Antipsychotic
- 3- Antacids
- 4- Benzodiazepines... See more

Solution  
[www.facebook.com/pharmavideo/](http://www.facebook.com/pharmavideo/)



**ANSWER- THE RIGHT ANSWER IS- O3**



**Solution**

13 August at 9:00 AM · 🌐

Drug producing allergic reaction generally acts as (or Behave as)-

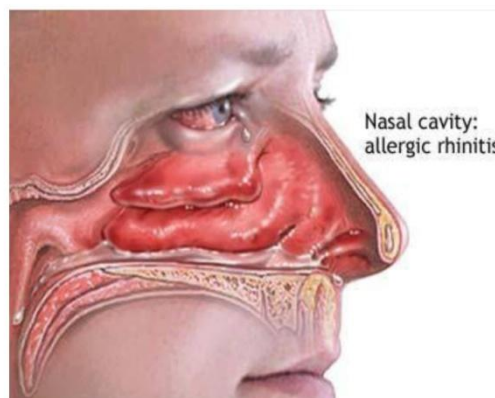
- 1- Complete Antagonist
- 2- Haptenes
- 3- Antibodies
- 4- Mediators

Solution  
[www.facebook.com/pharmavideo/](http://www.facebook.com/pharmavideo/)

For pharmacy related experimental videos please visit & subscribe solution on youtube.

[www.youtube.com/c/SOLUTIONpushpendra](http://www.youtube.com/c/SOLUTIONpushpendra)

Image credit- Adam



**ANSWER- THE RIGHT ANSWER IS- O2**



**Solution**

14 August at 9:00 AM · 🌐

The following is proven human teratogens-

- 1- Chloroquine
- 2- Warfarin sodium
- 3- Dicyclomine
- 4- Methyl dopa

Solution  
[www.facebook.com/pharmavideo/](http://www.facebook.com/pharmavideo/)

For pharmacy related experimental videos... See more



**ANSWER- THE RIGHT ANSWER IS- O2**



**Solution**

15 August at 9:01 AM · 🌐

The drug is known to produce phocomelia is-

- 1- Tetracycline
- 2- Thalidomide
- 3- Warfarin
- 4- Tetracycline

Solution  
[www.facebook.com/pharmavideo/](http://www.facebook.com/pharmavideo/)

For pharmacy related experimental videos please visit & subscribe solution on youtube.

[www.youtube.com/c/SOLUTIONpushpendra](http://www.youtube.com/c/SOLUTIONpushpendra)



**ANSWER- THE RIGHT ANSWER IS- O2**



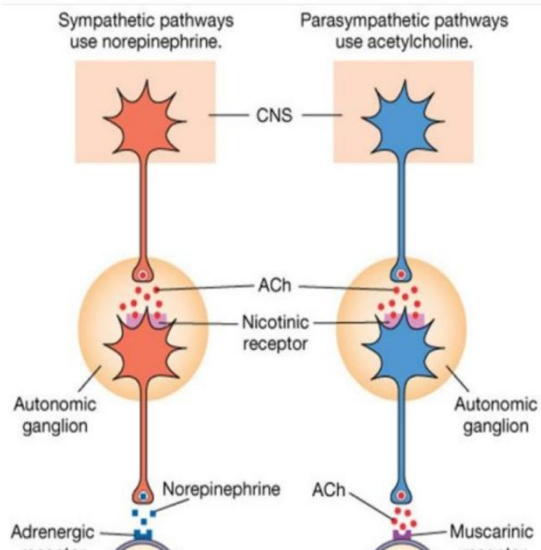
### Solution

16 August at 9:00 AM · 🌐

The agents which act commonly both on parasympathetic and sympathetic division is-

- 1- Atropine
  - 2- Pilocarpine
  - 3- Acetylcholine
  - 4- Adrenaline
- ... See more

Solution  
[www.facebook.com/pharmavideo/](http://www.facebook.com/pharmavideo/)



**ANSWER- THE RIGHT ANSWER IS- 03**



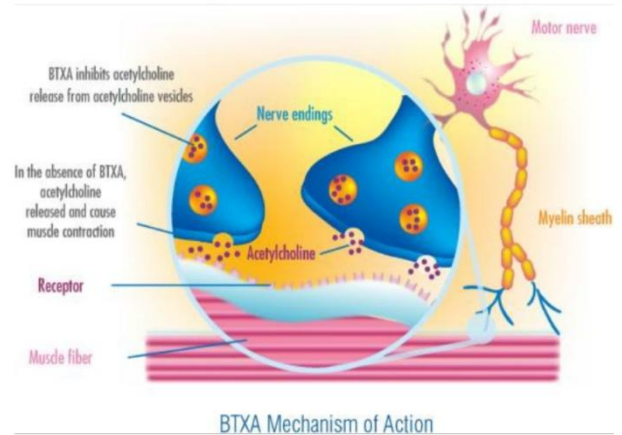
### Solution

17 August at 9:00 AM · 🌐

The mechanism by which botulinum toxin produce skeletal muscle paralysis is by-

- 1- Enhancing release of norepinephrine
  - 2- Inhibiting release of acetylcholine
  - 3- Direct damaging to nerve cells
  - 4- Producing hemolysis
- Solution  
[www.facebook.com/pharmavideo/](http://www.facebook.com/pharmavideo/)

For pharmacy related experimental videos please visit & subscribe solution on youtube.  
[www.youtube.com/c/SOLUTIONpushpendra](http://www.youtube.com/c/SOLUTIONpushpendra)



BTX Mechanism of Action

**ANSWER- THE RIGHT ANSWER IS- 02**



### Solution

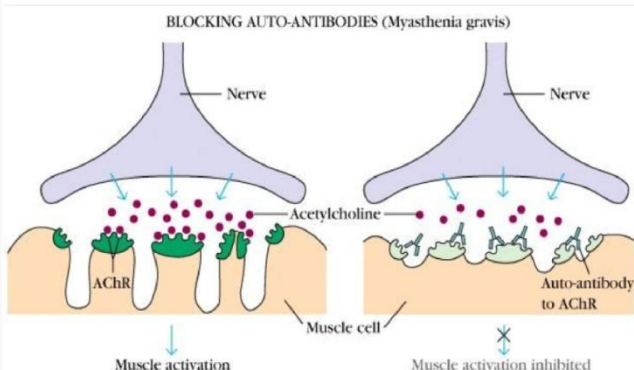
18 August at 9:00 AM · 🌐

Which of the following secretion is NOT stimulated by acetylcholine-

- 1- Tear
- 2- Bile
- 3- Pancreatic juice
- 4- Sweat

Solution  
[www.facebook.com/pharmavideo/](http://www.facebook.com/pharmavideo/)

For pharmacy related experimental videos please visit & subscribe solution on youtube.  
[www.youtube.com/c/SOLUTIONpushpendra](http://www.youtube.com/c/SOLUTIONpushpendra)



**ANSWER- THE RIGHT ANSWER IS- 02**



### Solution

19 August at 9:00 AM · 🌐

Which of the following is used for mushroom poisoning ( Frequently asked question)

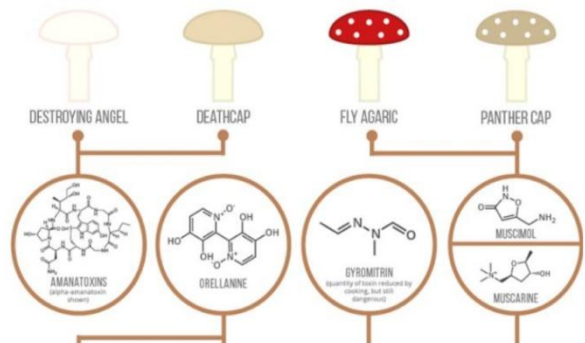
- 1- Atropine
- 2- Physostigmine
- 3- Adrenaline
- 4- Carbachol

Solution  
[www.facebook.com/pharmavideo/](http://www.facebook.com/pharmavideo/)

For pharmacy related experimental videos please visit & subscribe solution on youtube.  
[www.youtube.com/c/SOLUTIONpushpendra](http://www.youtube.com/c/SOLUTIONpushpendra)

### THE CHEMISTRY OF MUSHROOM POISONS

Different varieties of mushrooms can contain a range of poisonous compounds. This graphic looks at the major poisonous compounds in a number of common poisonous mushrooms.



**ANSWER- THE RIGHT ANSWER IS- 01**



### Solution

20 August at 9:00 AM · 🌐

In the ameliorative test for myasthenia gravis which drug is used?

- 1- Physostigmine
- 2- Edrophonium
- 3- Tracrine
- 4- Pyridostigmine

Solution  
[www.facebook.com/pharmavideo/](http://www.facebook.com/pharmavideo/)

For pharmacy related experimental videos please visit & subscribe solution on youtube.

[www.youtube.com/c/SOLUTIONpushpendra](http://www.youtube.com/c/SOLUTIONpushpendra)



**ANSWER- THE RIGHT ANSWER IS- 02**



### Solution

21 August at 9:00 AM · 🌐

Which is the most important drug in the treatment of organophosphate poisoning-

- 1- Atropine sulphate
- 2- Pralidoxime
- 3- Diazepam
- 4- Adrenaline

Solution  
[www.facebook.com/pharmavideo/](http://www.facebook.com/pharmavideo/)

For pharmacy related experimental videos please visit & subscribe solution on youtube.

[www.youtube.com/c/SOLUTIONpushpendra](http://www.youtube.com/c/SOLUTIONpushpendra)



**ANSWER- THE RIGHT ANSWER IS- 01**



### Solution

22 August at 9:00 AM · 🌐

Atropine produce the following action accept-

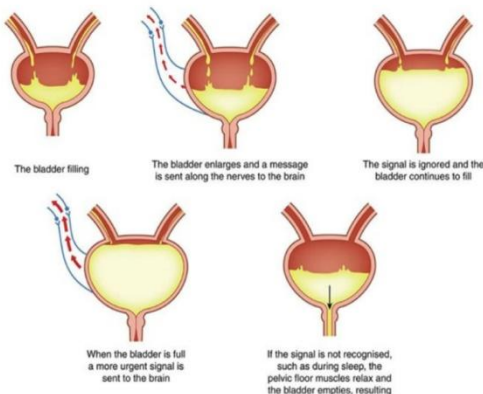
- 1- Tachycardia
- 2- Mydriasis
- 3- Dryness of mouth
- 4- Urinary Incontinence

Solution  
[www.facebook.com/pharmavideo/](http://www.facebook.com/pharmavideo/)

For pharmacy related experimental videos... See more

### BLADDER FILLING & URINARY INCONTINENCE

SOURCE: WWW.DRELIST.COM



**ANSWER- THE RIGHT ANSWER IS- 04**



### Solution

23 August at 9:00 AM · 🌐

The drug used for retinoscopy in 05-year-old child is-

- 1- Atropine
- 2- Homatropine
- 3- cyclopentolate
- 4- Tropicamide

Solution  
[www.facebook.com/pharmavideo/](http://www.facebook.com/pharmavideo/)

For pharmacy related experimental videos please visit & subscribe solution on youtube.

[www.youtube.com/c/SOLUTIONpushpendra](http://www.youtube.com/c/SOLUTIONpushpendra)



**ANSWER- THE RIGHT ANSWER IS- 01**



### Solution

Friday at 9:00 AM · 🌐

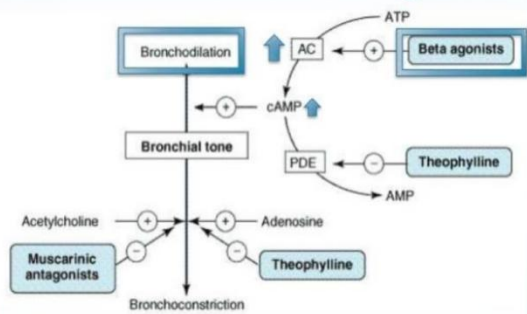
The adverse effects of Beta 2 agonist is-

- 1- Hypoglycemia
- 2- Hypomagnesemia
- 3- Hypophosphatemia
- 4- Hypokalemia

Solution  
[www.facebook.com/pharmavideo/](http://www.facebook.com/pharmavideo/)

For pharmacy related experimental videos please visit & subscribe solution on youtube.  
[www.youtube.com/c/SOLUTIONpushendra](http://www.youtube.com/c/SOLUTIONpushendra)

### Mechanism of Beta 2 agonists



**ANSWER- THE RIGHT ANSWER IS- O4**



### Solution

24 August at 9:00 AM · 🌐

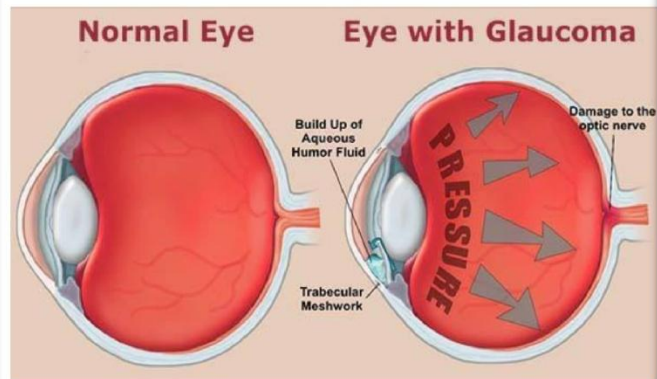
A drug contraindicated in angle closure glaucoma is-

- 1- Pilocarpine
- 2- Atropine
- 3- Dorzolamide
- 4- Timolol

Solution  
[www.facebook.com/pharmavideo/](http://www.facebook.com/pharmavideo/)

For pharmacy related experimental videos please visit & subscribe solution on youtube.

[www.youtube.com/c/SOLUTIONpushendra](http://www.youtube.com/c/SOLUTIONpushendra)



**ANSWER- THE RIGHT ANSWER IS- O2**



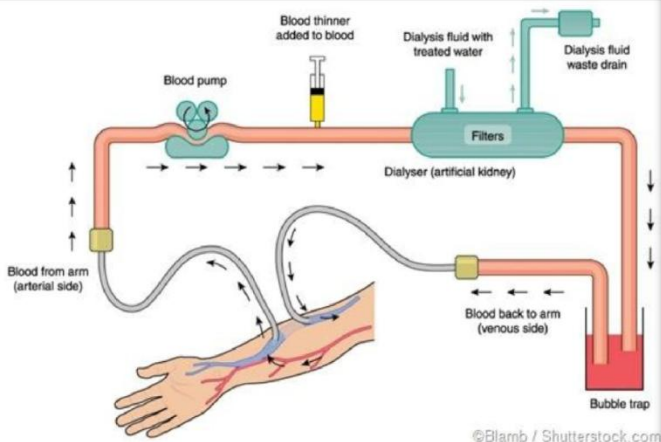
### Solution

23 August at 12:14 PM · 🌐

In case of poisoning which types of drug is not easily removed by haemodialysis

- 1- Drug with large Vd
- 2- Drug with Small Vd
- 3- Both of them
- 4- None of them

Solution  
[www.facebook.com/pharmavideo/](http://www.facebook.com/pharmavideo/)



**ANSWER- THE RIGHT ANSWER IS- O1**



### Solution

Sunday at 9:00 AM · 🌐

The common side effects of salbutamol is

- 1- Tremors
- 2- Hypertension
- 3- Rhinorrhoea
- 4- Headache

Solution  
[www.facebook.com/pharmavideo/](http://www.facebook.com/pharmavideo/)

For pharmacy related experimental videos... See more



**ANSWER- THE RIGHT ANSWER IS- O1**



### Solution

Saturday at 9:00 AM · 🌐

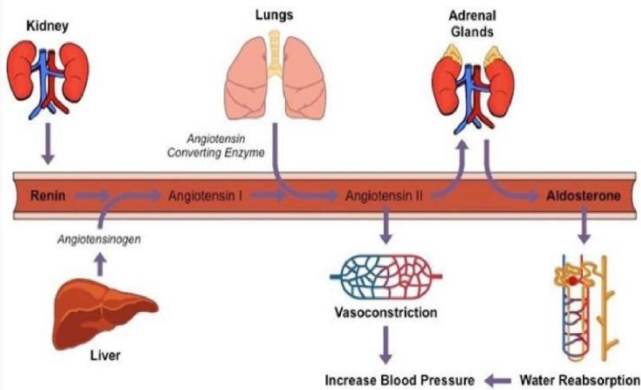
The receptor responsible for renin release is-

- 1- Alpha 1
- 2- Alpha 2
- 3- Beta 1
- 4- Beta 2

Solution  
[www.facebook.com/pharmavideo/](http://www.facebook.com/pharmavideo/)

For pharmacy related experimental videos please visit & subscribe solution on youtube.

[www.youtube.com/c/SOLUTIONpushpendra](http://www.youtube.com/c/SOLUTIONpushpendra)



**ANSWER- THE RIGHT ANSWER IS- 03**



### Solution

Tuesday at 9:00 AM · 🌐

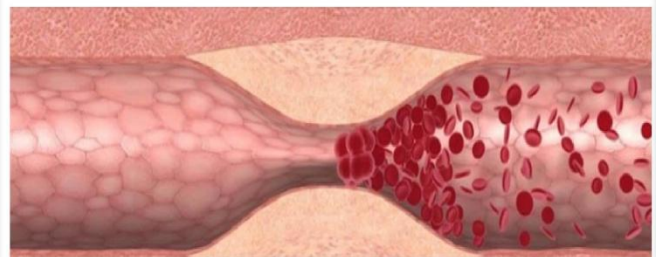
Vasoconstrictor should not be used in-

- 1- Neurogenic shock
- 2- Hemorrhagic Shock
- 3- Secondary Shock
- 4- Hypotension due to spinal anaesthesia

Solution  
[www.facebook.com/pharmavideo/](http://www.facebook.com/pharmavideo/)

For pharmacy related experimental videos please visit & subscribe solution on youtube.

[www.youtube.com/c/SOLUTIONpushpendra](http://www.youtube.com/c/SOLUTIONpushpendra)



**ANSWER- THE RIGHT ANSWER IS- 03**



### Solution

Yesterday at 9:00 AM · 🌐

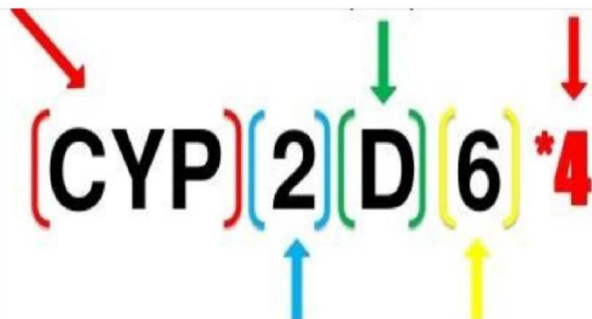
in "CYP3A4/5" the number 3, stands for-

- 1- Family
- 2- Subfamily
- 3- Binding Sites
- 4- Isoenzyme

Solution  
[www.facebook.com/pharmavideo/](http://www.facebook.com/pharmavideo/)

For pharmacy related experimental videos please visit & subscribe solution on youtube.

[www.youtube.com/c/SOLUTIONpushpendra](http://www.youtube.com/c/SOLUTIONpushpendra)



**ANSWER- THE RIGHT ANSWER IS- 01**



### Solution

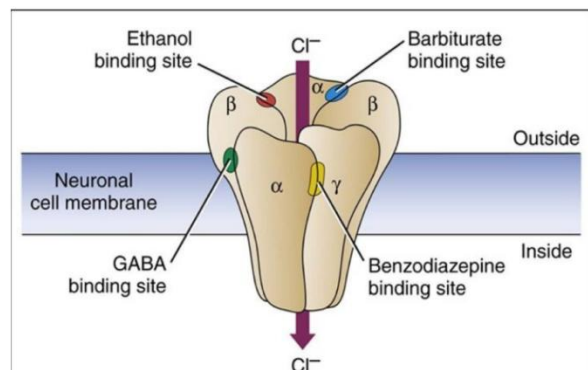
9 hrs · 🌐

Match the correct protein binding percentage of BZD (It will Take time)

- 1- Flurazepam- (A) 99%
- 2- Lorazepam- (B) 90%
- 3- Alprazolam- (C) 10%
- 4- Diazepam- (D) 70%

Solution  
[www.facebook.com/pharmavideo/](http://www.facebook.com/pharmavideo/)

- 1- 1-C, 2-B,3-D,4-A
- 2- 1-C,2-B,3-A,4-D
- 3- 1-D, 2-C,3-B,4-A
- 4- 1- A,2-D,3-C,4-B



**ANSWER- THE RIGHT ANSWER IS- 01**





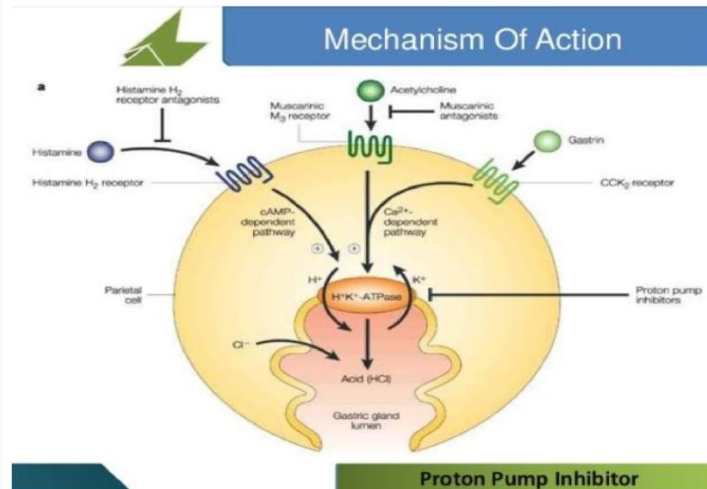
### Solution

24 August at 9:00 AM · 🌐

Ranitidine differ from cimetidine in the following respects

- 1- It is less potent
- 2- It is shorter acting
- 3- It doesn't have antiandrogenic action
- 4- CNS side effect

Solution  
[www.facebook.com/pharmavideo/](http://www.facebook.com/pharmavideo/)



**ANSWER- THE RIGHT ANSWER IS- 03**

### SOLUTION- Your Pharmacy Friend

We are available in Facebook and YouTube. Please scan these QR code to reach us-



09

I don't sale knowledge, because knowledge is for share not for sale.

Please share if you think solution deserves to reach every pharmacy professionals.

Click the following link to directly reach us (Works only in PDF)

<http://www.facebook.com/pharmavideo/>

<https://www.youtube.com/c/SOLUTIONpushendra>